

144° 45'

144° 50'

144° 55'



This map is part of a collection from the  
**DIGITAL ATLAS OF NORTHERN GUAM**  
[www.hydroguam.net](http://www.hydroguam.net)

Created by:



**Water and Environmental Research  
Institute of the Western Pacific**  
[www.weriguam.org](http://www.weriguam.org)

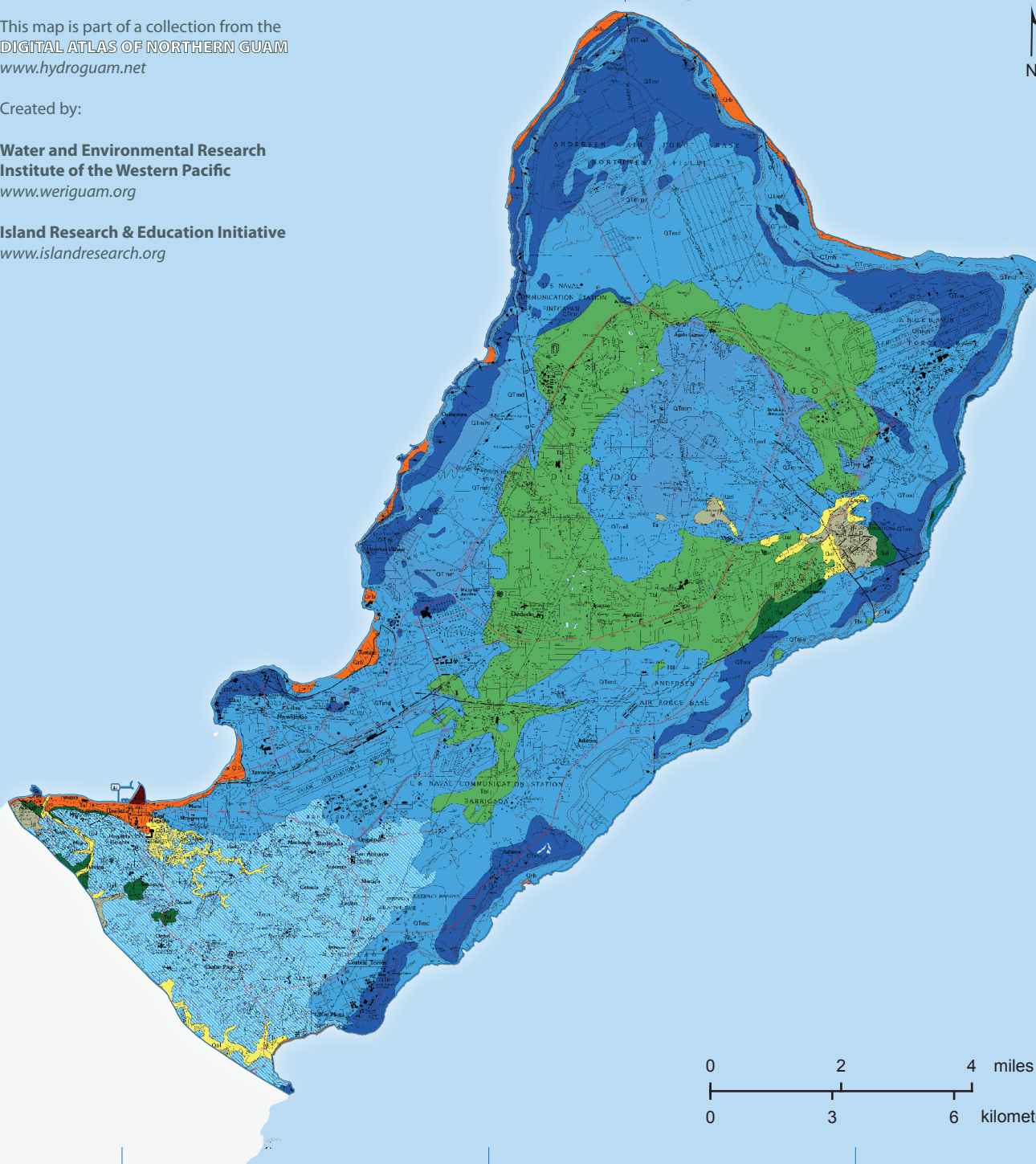


**Island Research & Education Initiative**  
[www.islandresearch.org](http://www.islandresearch.org)

13° 35'

13° 30'

13° 25'



## Geologic map (raster image)

This geologic map is the result of work by Siegrist, H.G. and Reagan, M., under auspices of Water and Environmental Research Institute of the Western Pacific (WERI). It is an update and revision of the original Geologic Map of Guam by Tracey et al. (1964). Reinterpretation and revision of the map utilized a wealth of new data, including radiometric dating of selected volcanic rocks and a thin-section study of new limestone specimens. The work resulted in a single 1:50,000-scale map, as well as nine 1:24,000 scale maps, corresponding to the USGS 7.5-minute quadrangles that cover the island of Guam. The maps were published in early 2008 and are available for download from the WERI website (<http://www.weriguam.org/locally-sponsored-research/guam-hydrologic-survey/page/geologic-maps.html>). The 1:50,000 scale map shown here was scanned and georeferenced as Digital Raster Graphics (DRG).



Cartography and design  
by Danko Taborosi  
and Maria Kottermaier,  
2013.



This map is for awareness and educational  
purposes only. It contains no authoritative positional  
or other information. See the full disclaimer at  
[www.north.hydroguam.net/disclaimer.html](http://www.north.hydroguam.net/disclaimer.html)



Work funded under award NA11NOS4190115 from the  
National Oceanic and Atmospheric Administration (NOAA),  
office of Ocean and Coastal Resource Management and the  
Guam Coastal Management Program, Bureau of Statistics and Plans.



Contact us at:  
WERI, University of Guam  
Mangilao, GU 96923  
[www.weriguam.org](http://www.weriguam.org)