

144° 45'

144° 50'

144° 55'



This map is part of a collection from the **DIGITAL ATLAS OF NORTHERN GUAM**
www.hydroguam.net

Created by:



**Water and Environmental Research
Institute of the Western Pacific**
www.weriguam.org



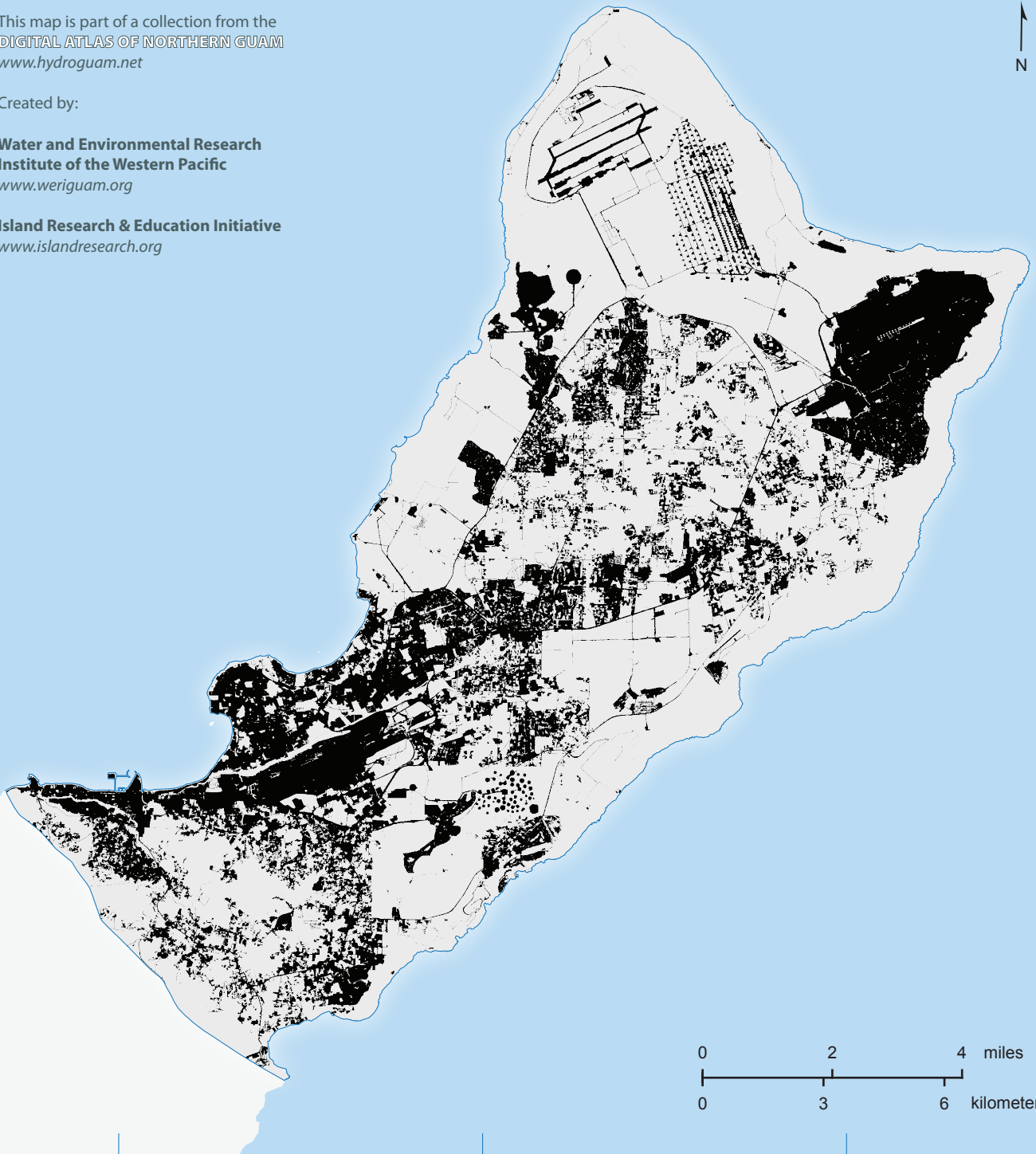
Island Research & Education Initiative
www.islandresearch.org



13° 35'

13° 30'

13° 25'



Built-up and developed land (from detailed landcover map, 2011)

 Developed land

This map shows the extent of developed areas in northern Guam. It includes all impervious surfaces and open developed spaces. Impervious surfaces are anthropogenic features such as buildings, parking lots and roads developed from asphalt, concrete, or other constructed surfaces that do not allow infiltration from precipitation. Open developed spaces include mostly vegetation in the form of grass lawns, but also areas with some mixture of open spaces and constructed objects. These areas most commonly include large-lot single-family housing units, parks, golf courses, and vegetation planted in developed settings for recreation, erosion control, or aesthetic purposes. The geospatial data used were extracted from 2011 land cover classification by NOAA Coastal Change Analysis Program (C-CAP).



Cartography and design
by Danko Taborosi
and Maria Kottermair,
2013.



This map is for awareness and educational
purposes only. It contains no authoritative positional
or other information. See the full disclaimer at
www.north.hydroguam.net/disclaimer.html



Work funded under award NA11NOS4190115 from the
National Oceanic and Atmospheric Administration (NOAA),
office of Ocean and Coastal Resource Management and the
Guam Coastal Management Program, Bureau of Statistics and Plans.



Contact us at:
WERI, University of Guam
Mangilao, GU 96923
www.weriguam.org